

Farm Retirement

LOCATION: 8322 86th St SE, Monango, ND 58436

AUCTION

THURSDAY, SEPTEMBER 10 | 10:30AM 2020



Built on Trust.

PREVIEW: Two weeks prior by appointment, contact Kenneth | **LOADOUT:** All items to be picked up within two weeks of auction by appointment, contact Kenneth. **AUCTIONEER'S NOTE:** Major equipment begins selling at 10:30 AM. Live online bidding available on major equipment. Registration, terms, & details at SteffesGroup.com

TRACTORS

2004 Case-IH STX375, 4WD, deluxe cab, buddy seat, powershift, 4 hyd., return flow, rear suitcase weights, electric mirrors, 620/70R42 duals, 1,930 hrs., single owner, S/NJEE0104863

2007 John Deere 7930, MFWD, IVT, LH reverser, deluxe cab, buddy seat, 4 hyd., 45 gpm hyd. pump, 3 pt., quick hitch, 540/1000 PTO, LED lights, integrated auto steer, Cat 3 drawbar, front fenders, (12) suitcase weights, rear wheel weights, 380/85R34 front tires, 480/80R46 rear duals, 1,692 hrs., S/NRW7930D003675

1994 John Deere 4960, MFWD, CAH, powershift, 3 hyd., 3 pt., quick hitch, 1000 PTO, diff lock, front suitcase weights, rear wheel weights, front fenders, 380/85R30 front tires, 18.4R46 rear tires duals, 3,108 hrs., single owner, S/NRW4960P009698

HARVEST EQUIPMENT

2012 Case-IH 7230, axial flow, Field Tracker, Power Plus CVT, standard rotor, luxury cab, red leather, buddy seat, deluxe controls, Pro 700 display, 372 receiver, integrated auto steer, extended high cap. unloading auger, hopper ext., fine cut chopper, rock trap, HID lights, small wire & round bar concaves, trailer hitch, 520/85R42 duals, 600/65R26 rears, 380 sep. hrs., 594 engine hrs., single owner, S/NYCG216401

2011 Case-IH 3020 TerraFlex flex head, 35', finger reel, AHH, hyd. fore/aft, single drive, 3" cut, CWS air bar, single pt. hookups, S/NYBZL57765

Case-IH 2208 non-chopping corn head, 8x30", knife rolls, hyd. deck plates, single pt. hookups, poly snouts, converted to fit Flagship combines, S/NCBJ024776

Johnson single axle 4-wheel header trailer, 35', dolly front conversion

Johnson single axle single pole header trailer, 25', will fit corn heads or flex heads

GRAIN CART

Brent 874 grain cart, 850 bu., 17" auger, roll tarp, 30.5-32 tires, 1000 PTO, S/N874297

AIR DRILL

Case-IH SDX40 air drill, 40', 7-1/2" & 15" space, AgTron full run blockage monitor, 22" discs, 2008 ADX3380 tow-behind commodity cart, 3 compartment, 380 bu., in-cab rate adj., double shoot, dual hyd. fans, hyd. fill auger, 22.5L-16.1 front tires, 30.5R32 rear tires, (2) course & (1) fine seed rollers, air drill S/N CBJ0017212, cart S/NCBJ0005419

PLANTER

1996 John Deere 7200 Conservation, pull type vacuum planter, 8x30", MaxEmerge 2 units, spring down pressure, dry fertilizer, mechanical drive, Dawn screw adj. trash whippers, hyd. markers, (2) corn, soybean, (2) sunflower & sorghum seed plates, S/NH07200H665280

SEED TENDER

Seed Shuttle SS290 tandem axle seed tender, 290 bushel, 2 compartment, Honda 5-1/2 hp. electric start gas motor, hyd. drive, 180 degree swing conveyor, wireless remote, tandem axle trailer, torsion susp., electric brakes, 2-5/16" ball hitch, 235/80R16 tires, S/N10036

TILLAGE EQUIPMENT

2005 Salford RTS570 vertical tillage, 30', 30" 8-wave blades, walking tandems across, single pt. depth, weight pkg., rolling baskets, 3-bar harrow, S/N05363

2008 Sunflower 1435 HD tandem disc, 30', 9" space, rock cushion gang, 22-1/2" front & 23" rear blades, single pt. depth, walking tandems across, wing stabilizer wheels, hyd. leveling, 3-bar harrow, S/N1435C08132

Case-IH 4300 field cultivator, 50', 7" space, 5-section fold, 9" sweeps, walking tandems across, Summers 3-bar harrow, S/NJAG0621115

John Deere 610 chisel plow, 41', 12" space, 3-section fold, walking tandems across, single pt. depth, 4" shovels, rear hitch, Degelman 3-bar harrow, S/NN00610X001756

John Deere 1600 chisel plow, 21', 12" space, walking tandems, 2" spikes, rear hitch, removable extensions to make it 13', S/N16292

ROW CROP EQUIPMENT

John Deere RM row crop cultivator, 8x30", 3 pt., S-tines, rolling shields

IHC row crop cultivator, 8x30", 3 pt., Vibra-Shanks

Case-IH 181MT rotary hoe, 3 pt., 30", hyd. fold, cab guard, parking stands, S/NJAG0210581

BOX TRUCKS

1981 IHC 1854 tag tandem, IHC 9L diesel, 5 & 2 spd., Scott's 20'x68" box, hoist, electric roll tarp, combo end gate, 10.00-20 tires, 78,187 miles

1979 GMC 7000 tag tandem, V8 gas, 5 & 2 spd., Buffalo 20'x68" box, hoist, electric roll tarp, combo end gate, 9.00-20 tires, 65,430 miles, single owner

1979 Ford F600 tag tandem, V8 gas, 5 & 2 spd., Knights 20'x60" box, hoist, roll tarp, combo end gate, 9.00-20 tires, shows 36,952

LIVESTOCK TRAILER

2005 Featherlight tandem axle aluminum gooseneck livestock trailer, 7'x24', (2) divider gates, aluminum floor, rubber floor mats, RH curb door, torsion susp., 7,000 lb. axles, single owner

SPRAYER, CHEMICAL CADDY & NH3 EQUIPMENT

Summers sprayer, 2 pt., 90' suspended boom, 500 gal. tank, wind screens, triple nozzle bodies, 3-section control, rinse tank, hyd. tip lift, Raven 440 controller w/radar, S/NW0739

Wil-Rich Wagon Master tandem axle tow between chemical caddy, 1000 gal. poly tank, hyd. pump, 2 section shut off w/controller, 12.5L15 flotation tires, S/N449554

Raven NH3 super cooler, flow meter, Raven 440 controller

GRAIN HANDLING & AERATION EQUIPMENT

1997 Westfield MK100-61 swing hopper auger, 61'x10", std. hopper, hyd. lift, 540 PTO, S/N95836

1997 Westfield WR100-31 load out auger, 31'x10", New 10 hp. 1 phase electric motor, on transport, S/N103697

1993 Westfield W70-36 load out auger, 36'x7", 5 hp., 1 phase electric motor, on transport, S/N67379

Versatile load out auger, 44'x8", 540 PTO, on transport

Westfield folding end gate drill fill, hyd. drive, steel flighting

Asst. 8" galvanized down spouts for grain leg, approx. 150'

30' of 8" auger flighting

Asst. bin aeration tubes

OTHER EQUIPMENT

Ashland I-110 hyd. push off scraper, 11 yd., dolly front, 16.5-16.1 front tires, 18.4R26 rear tires, S/N17060

Degelman 12-46/57 front mount dozer blade, 12', 4-way hyd. adj., quick tach brackets, mounts for John Deere 4960 MFWD, may work on different tractors, S/N19134

Summers reel type rockpicker, 3-bat reel, hyd. drive, flotation tires, offset hitch, 14L-16 flotation tires, S/N93383

John Deere manure bucket, 60", fits JD 148 loader

TANKS & FARM SUPPORT ITEMS

Solar 1,500 gal. poly tank, 2" fitting

120 gal. fuel service tank, (2) 60 gal. compartments, (1) Fill-Rite 12v pump

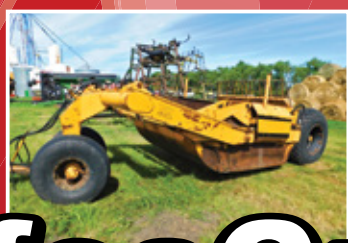
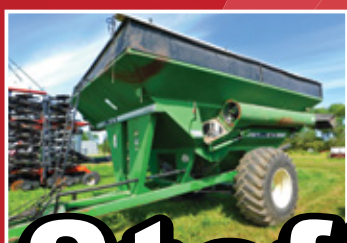
Harnessed Hyd. shop press, 20 ton

Sickle sharpener, on stand, 110v

Asst. truck & implement tires & rims



KENNETH & RACHEL KELLOGG | Kenneth, 701.830.8011
or Tadd Skaurud at Steffes Group, 701.237.9173 or 701.729.3644



SteffesGroup.com



Steffes Group, Inc., 2000 Main Avenue East, West Fargo, ND 58078

TERMS: All items sold as is where is. Payment of cash or check must be made sale day before removal of items. Statements made auction day take precedence over all advertising. \$35 documentation fee applies to all titled vehicles. Titles will be mailed. Canadian buyers need a bank letter of credit to facilitate border transfer. **Scott Steffes ND81, Bob Steffes ND82, Brad Olstad ND319, Max Steffes ND999, Justin Ruth ND2019**